

CUSTOM ROLLING LADDERS

6368



Mating Platforms

6782



Extending Deck

6679



Tilt Deck

Larger capacities available.

FEATURES

- Floor locks.
- Open mesh grip strut stairs, platform treads/decking.
- Handrail: 42" H OSHA approved included on both sides of stairs.
- 21" Midrail.
- 2" x 6" diameter swivel casters for portable movement.
- 2" x 6" diameter rigid casters for portable movement.

OPTIONS

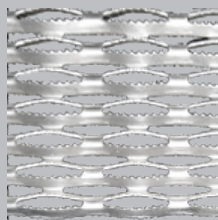
Fork Pockets



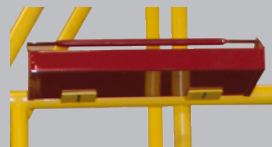
Floor Locks



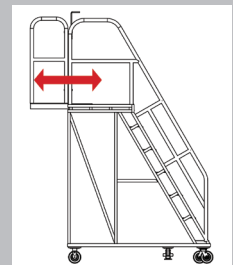
Grip Strut



Tool Trays



Extended Deck



SPECIFICATIONS

Model Number	Capacity
RL-6368	400 lbs.
RL-6782	400 lbs.
RL-6679	400 lbs.

Deck Dimensions to Specifications



2345 E. Garfield Ave.
Decatur, IL 62526
Ph: (217) 423-4100
Fax: (217) 423-4001
Web: www.aura-systems.com

